



City of Vancouver *Planning - By-law Administration Bulletins*

Community Services, 453 W. 12th Ave Vancouver, BC V5Y 1V4 ☎ 604.873.7000 fax 604.873.7060

planning@vancouver.ca

FLOOR SPACE EXCLUSIONS: SCHEDULE OF WALL ASSEMBLIES

Authority - Director of Planning

Effective July 13, 2011

1 Introduction

As discussed more fully in the By-law Administration Bulletin called Floor Space Exclusion To Accommodate Improved Building Performance (Envelope And Thermal Insulation), the 10 drawings contained in this document illustrate exclusions of portions of exterior walls that may be permitted, to a maximum of 333 cm. This applies to walls that fall under the Part 9 requirements of the Vancouver Building By-Law which provide greater than effective RSI 3.85 (R-22) of thermal insulation.

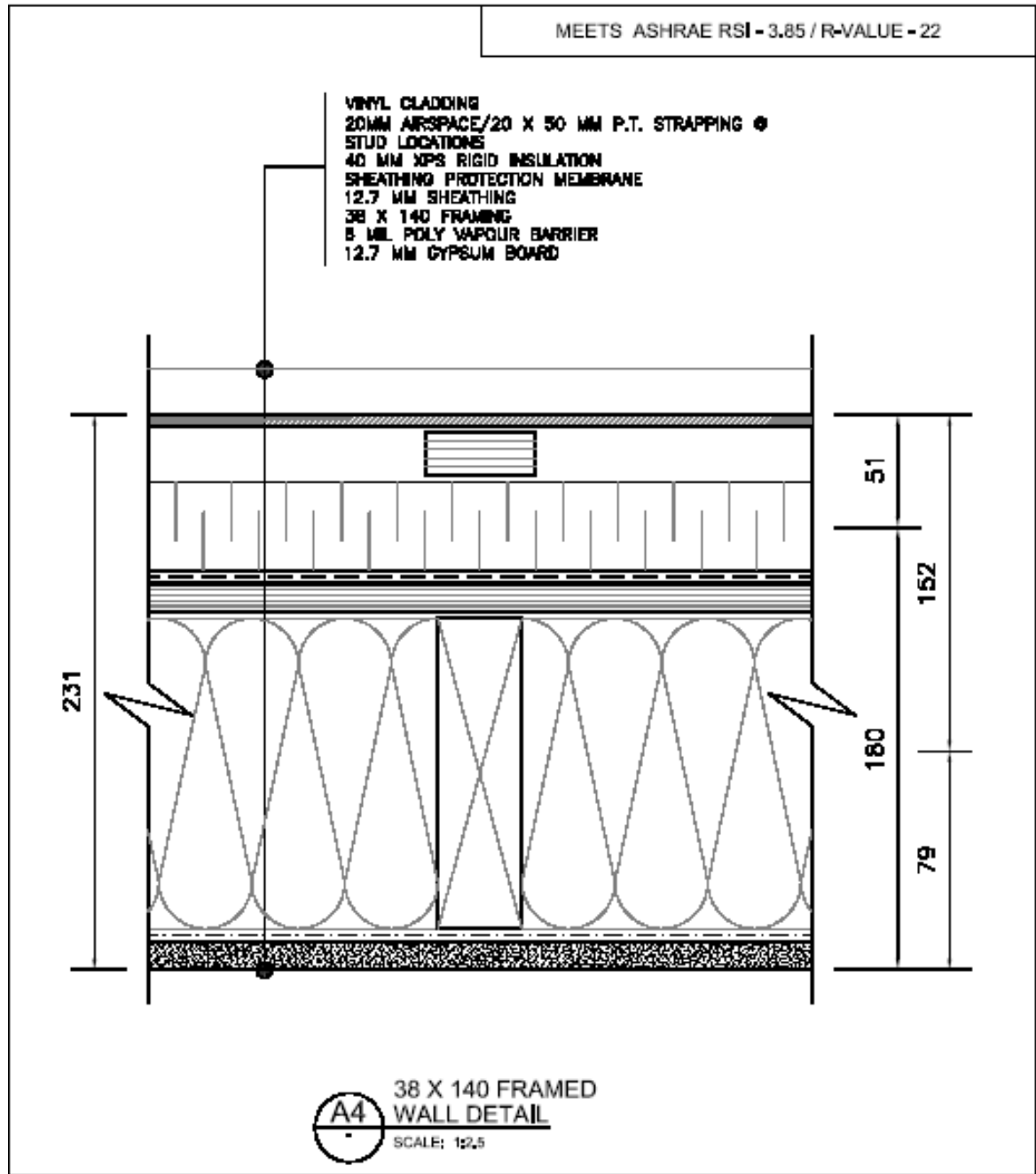
For those seeking greater exclusions for thicker walls, please consult the above-noted Planning Bulletin for submission requirements.

It should be noted that other regulations which are used to control bulk and massing, including height, yards and setbacks, remain unchanged and will not be relaxed.

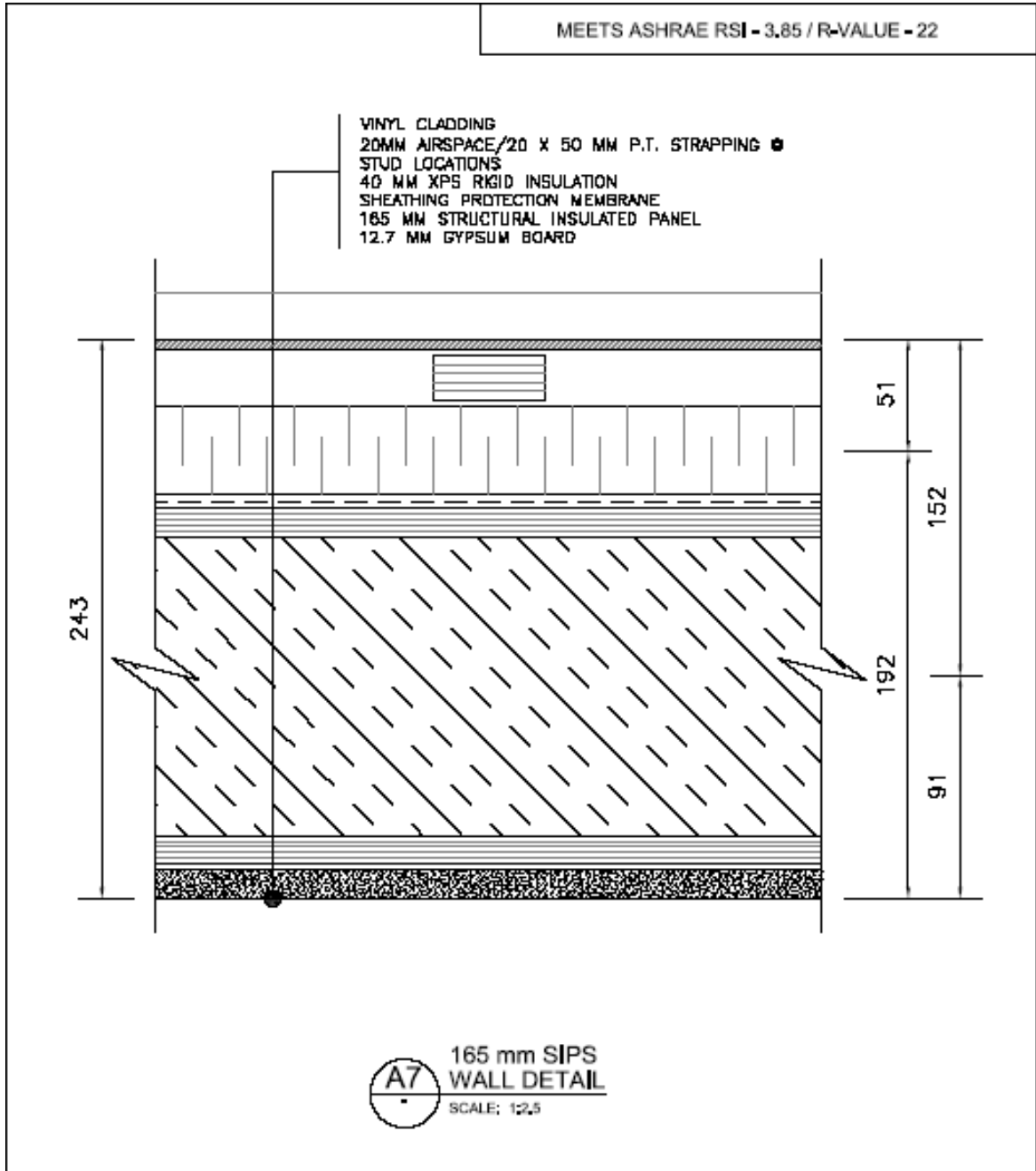
2 Schedule of Assemblies

The 10 drawings on the following pages illustrate typical wall assemblies that are eligible for exclusions, as well as the exclusion associated with each.

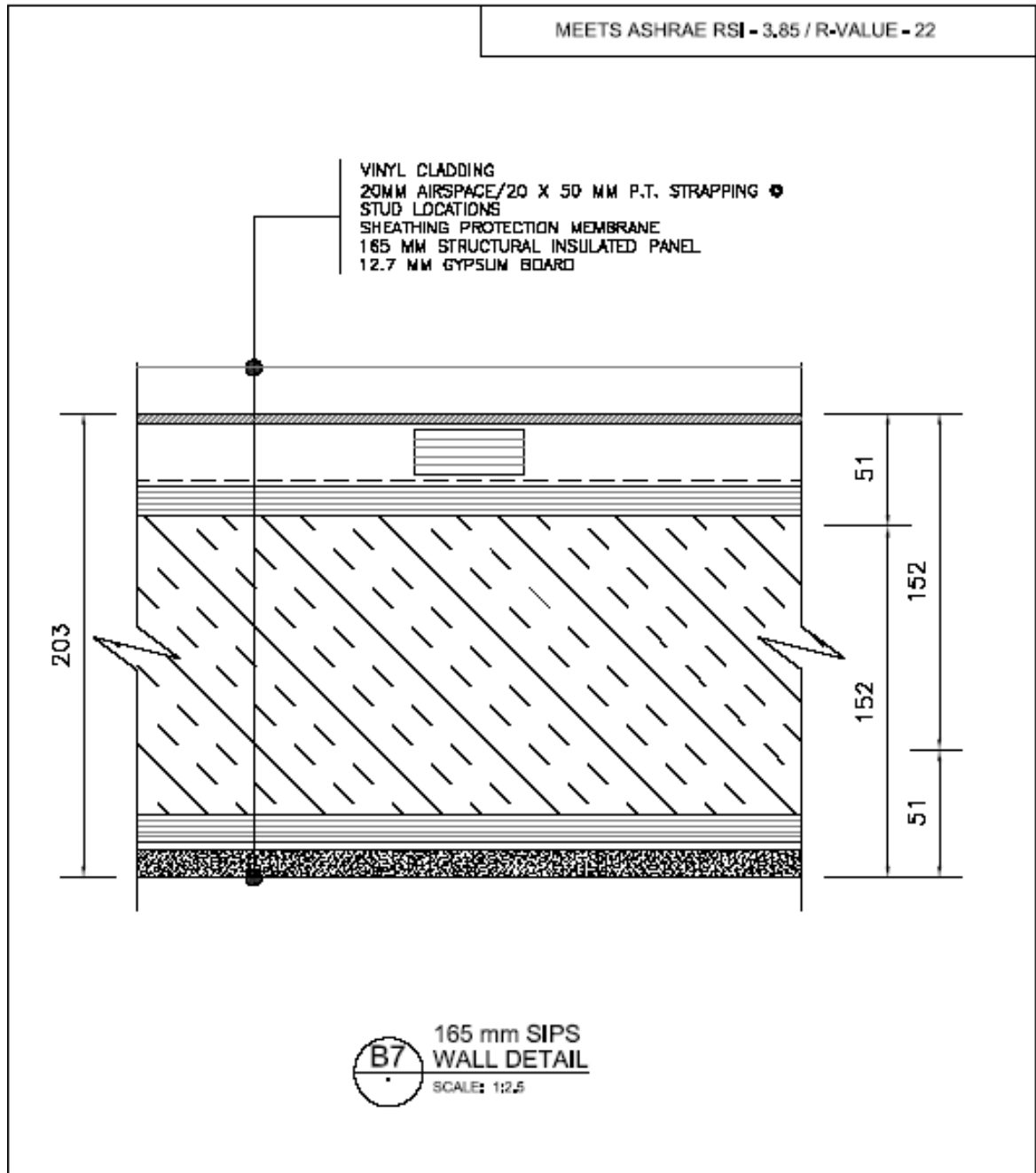
(a) For wall assembly A4, the maximum exclusion would be 79 mm.



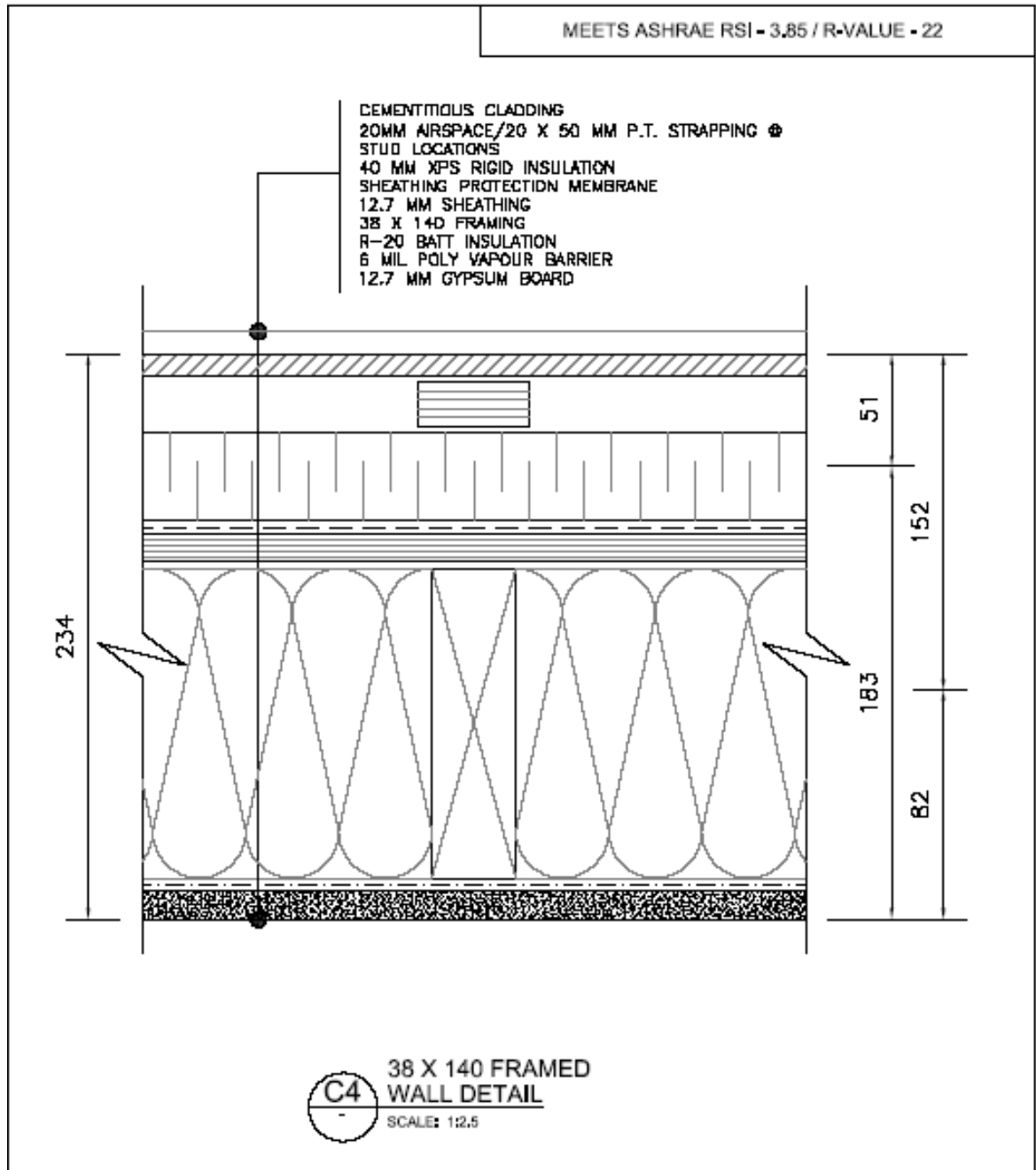
(b) For wall assembly A7, the maximum exclusion would be 91 mm.



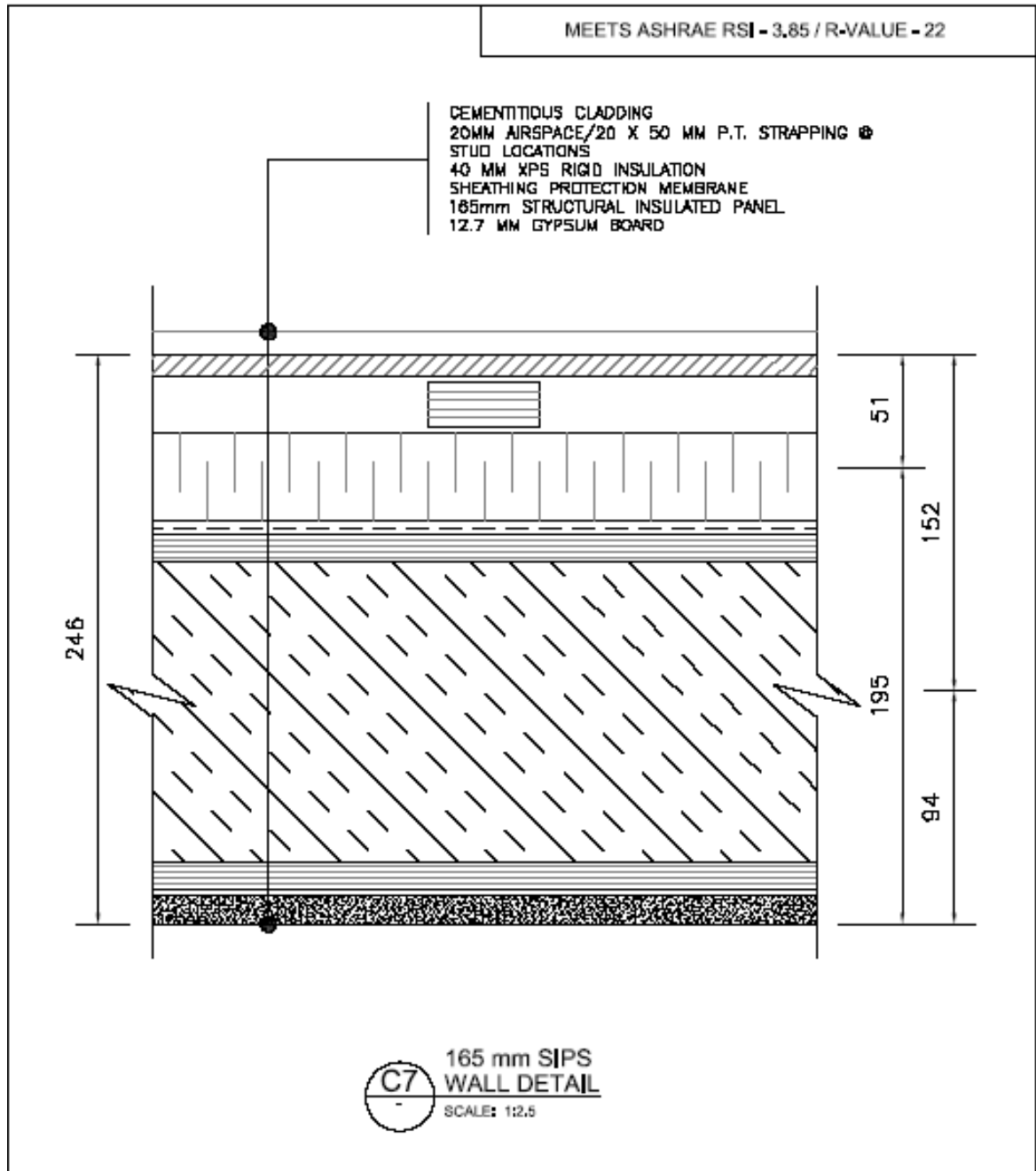
(c) For wall assembly B7, the maximum exclusion would be 51 mm.



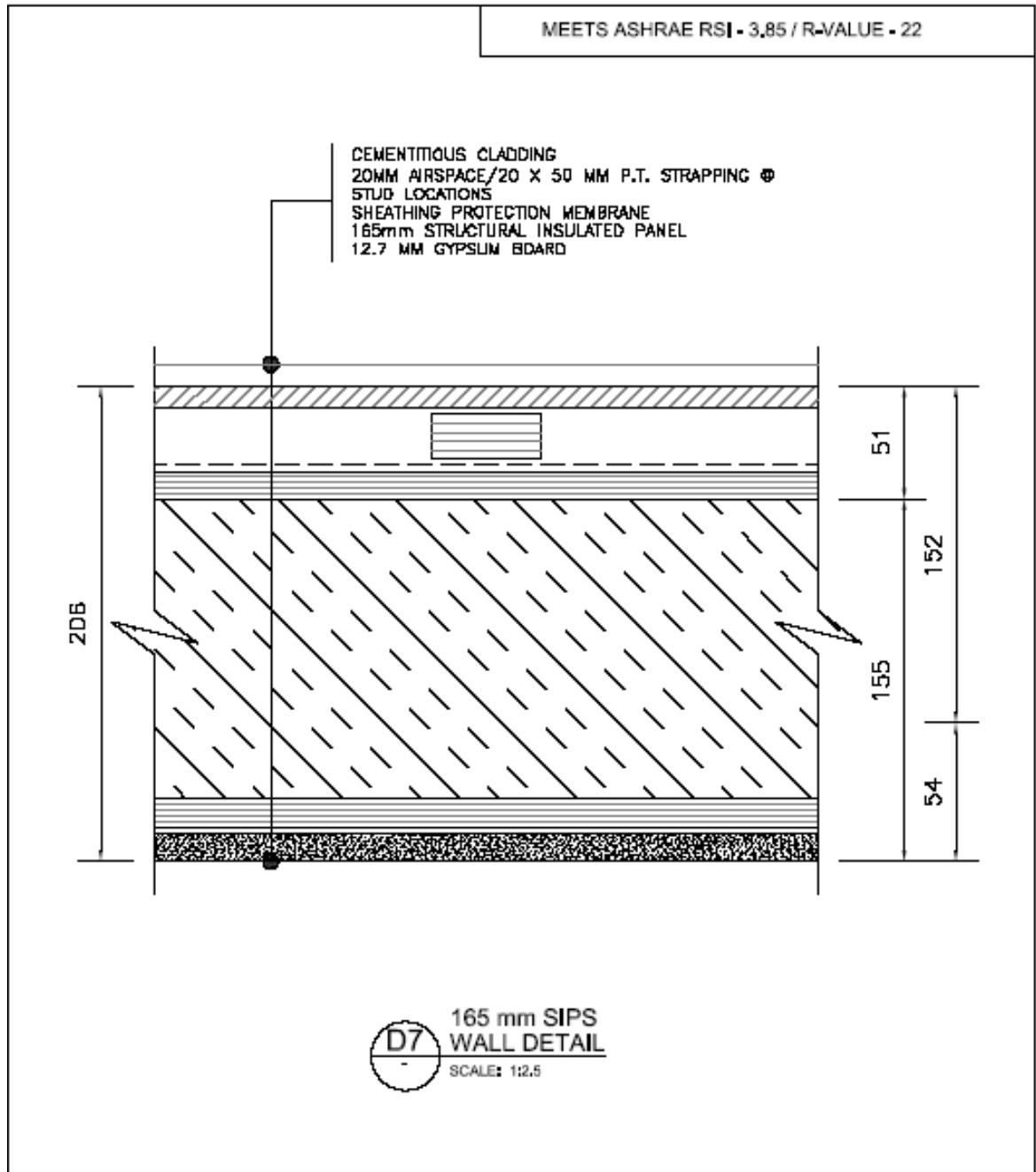
(d) For wall assembly C4, the maximum exclusion would be 82 mm.



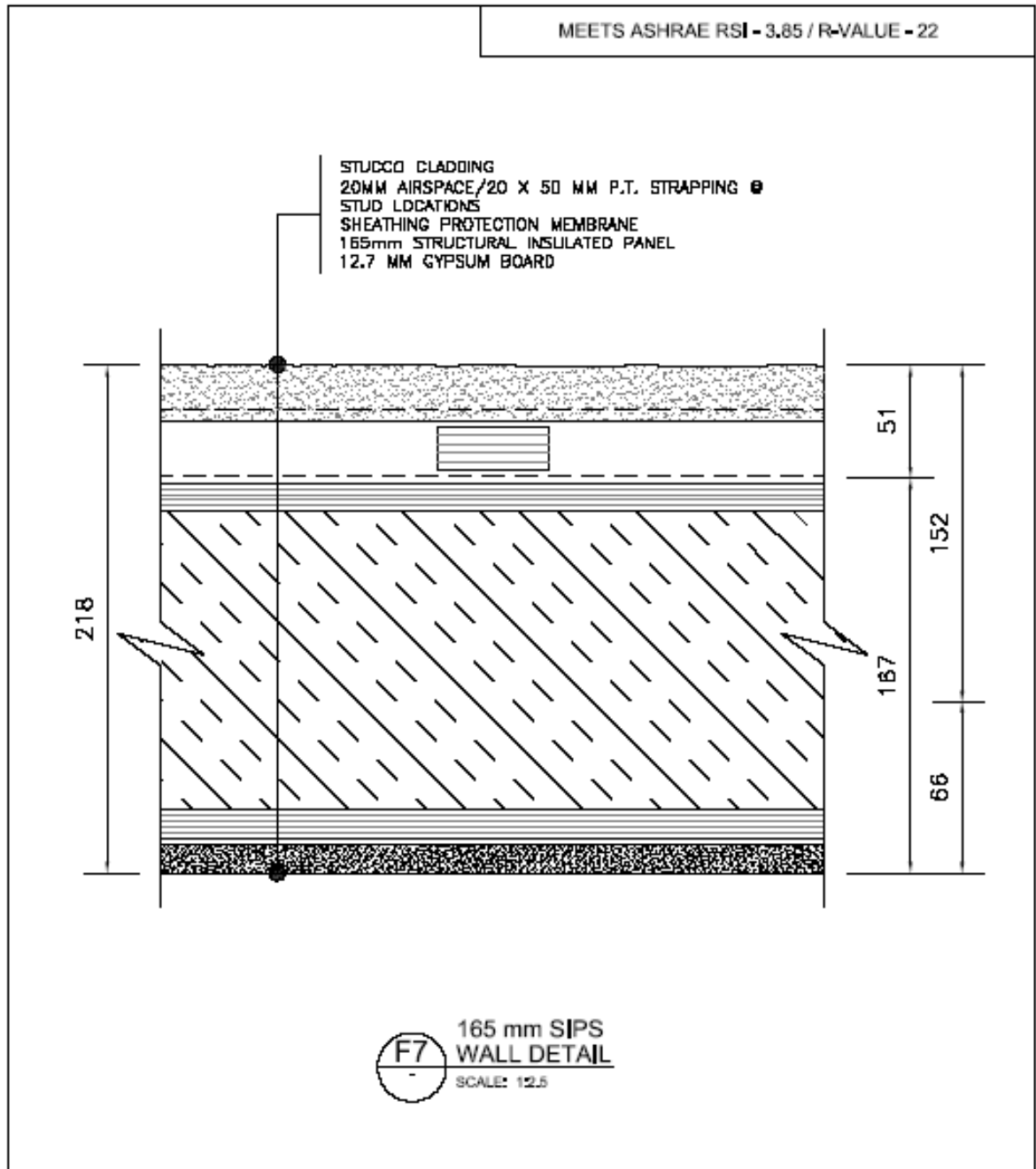
- (e) For wall assembly C7, the maximum exclusion would be 94 mm.



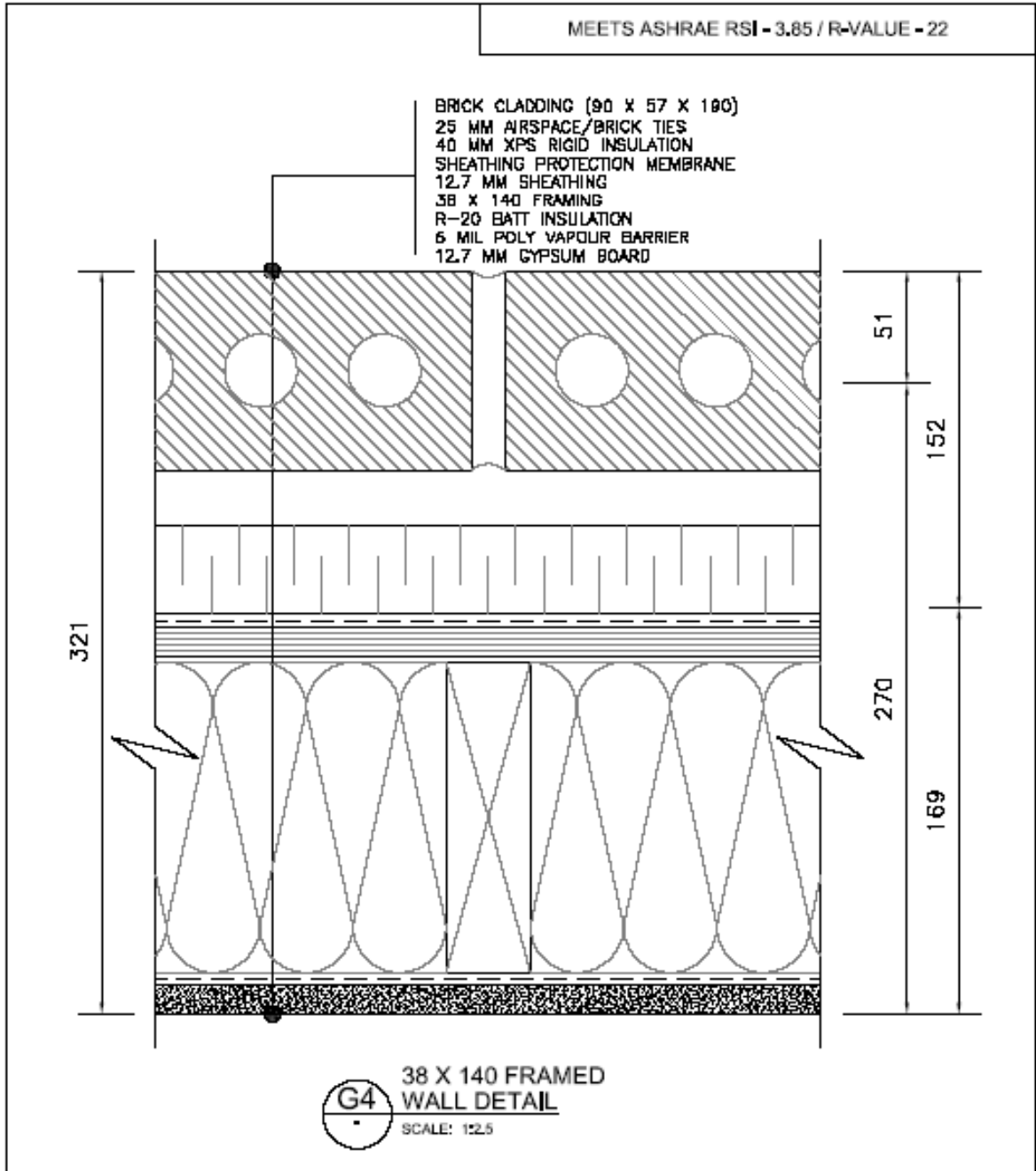
- (f) For wall assembly D7, the maximum exclusion would be 54 mm.



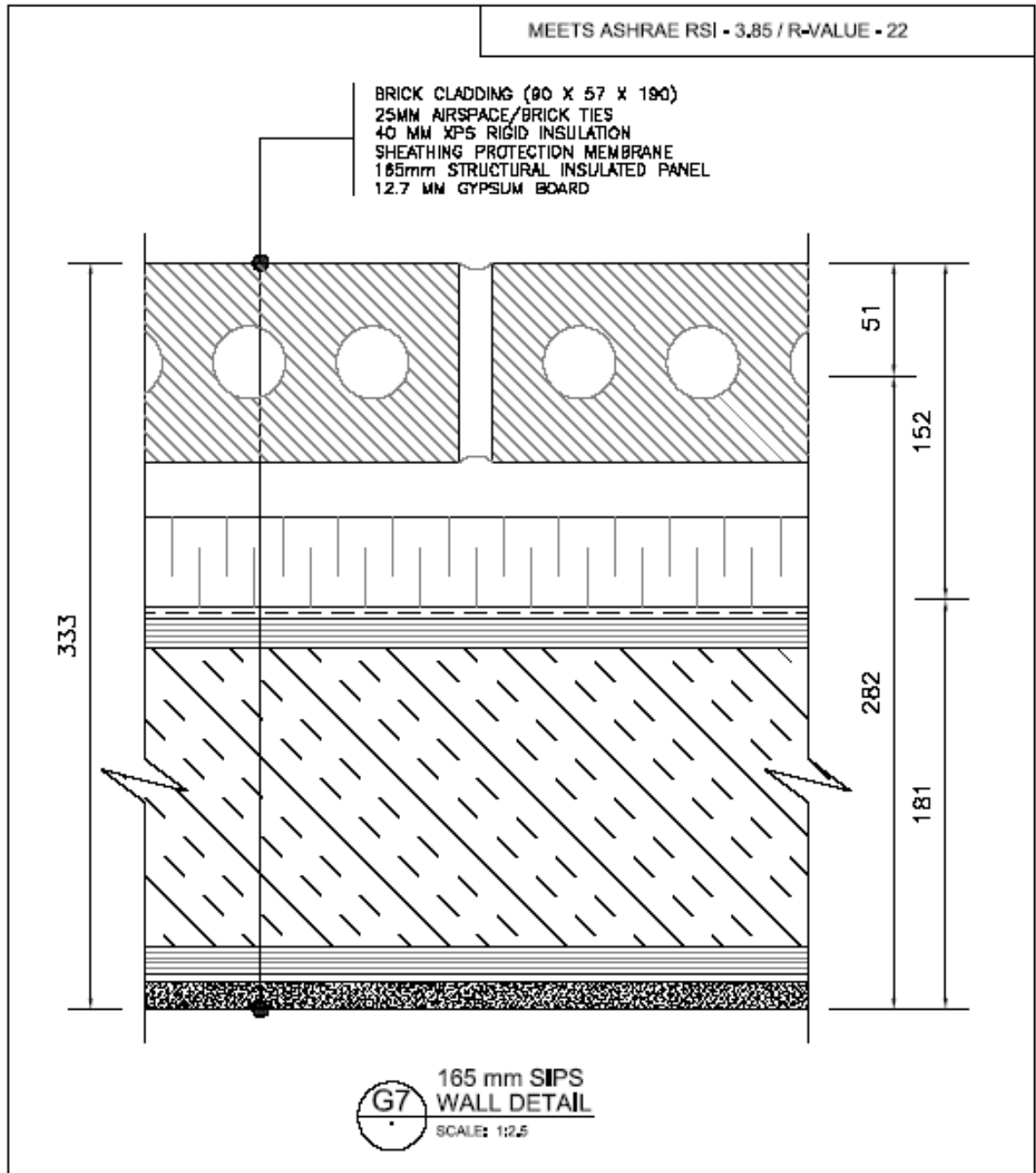
(g) For wall assembly F7, the maximum exclusion would be 66 mm.



(h) For wall assembly G4, the maximum exclusion would be 169 mm.



- (i) For wall assembly G7, the maximum exclusion would be 181 mm.



- (j) For wall assembly H7, the maximum exclusion would be 141 mm.

